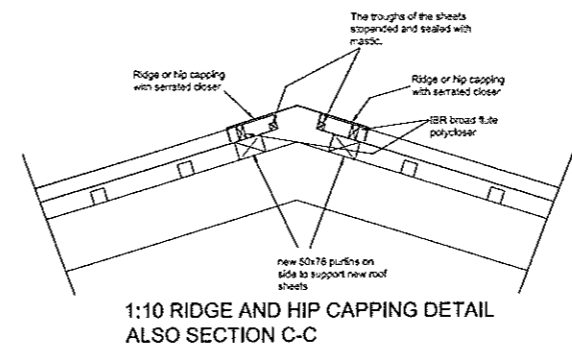
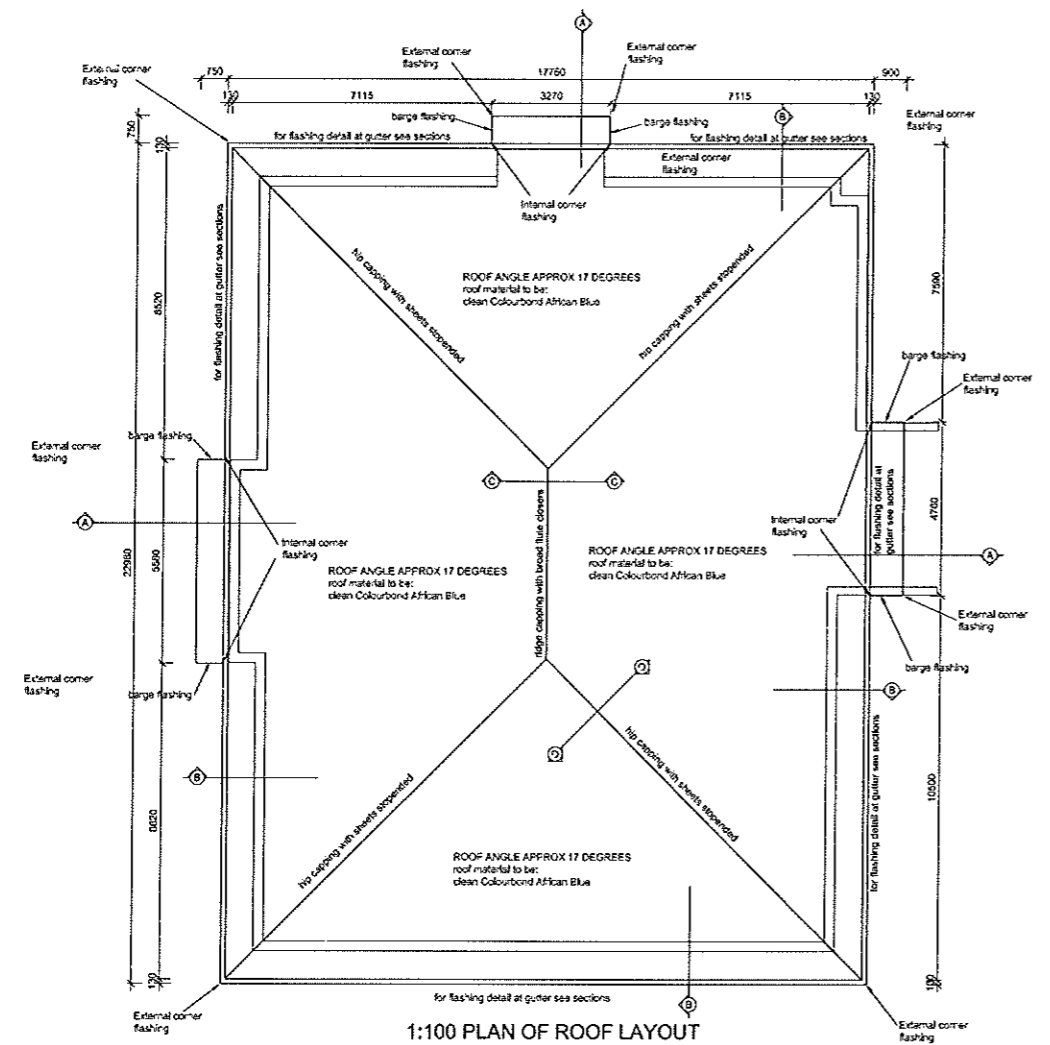
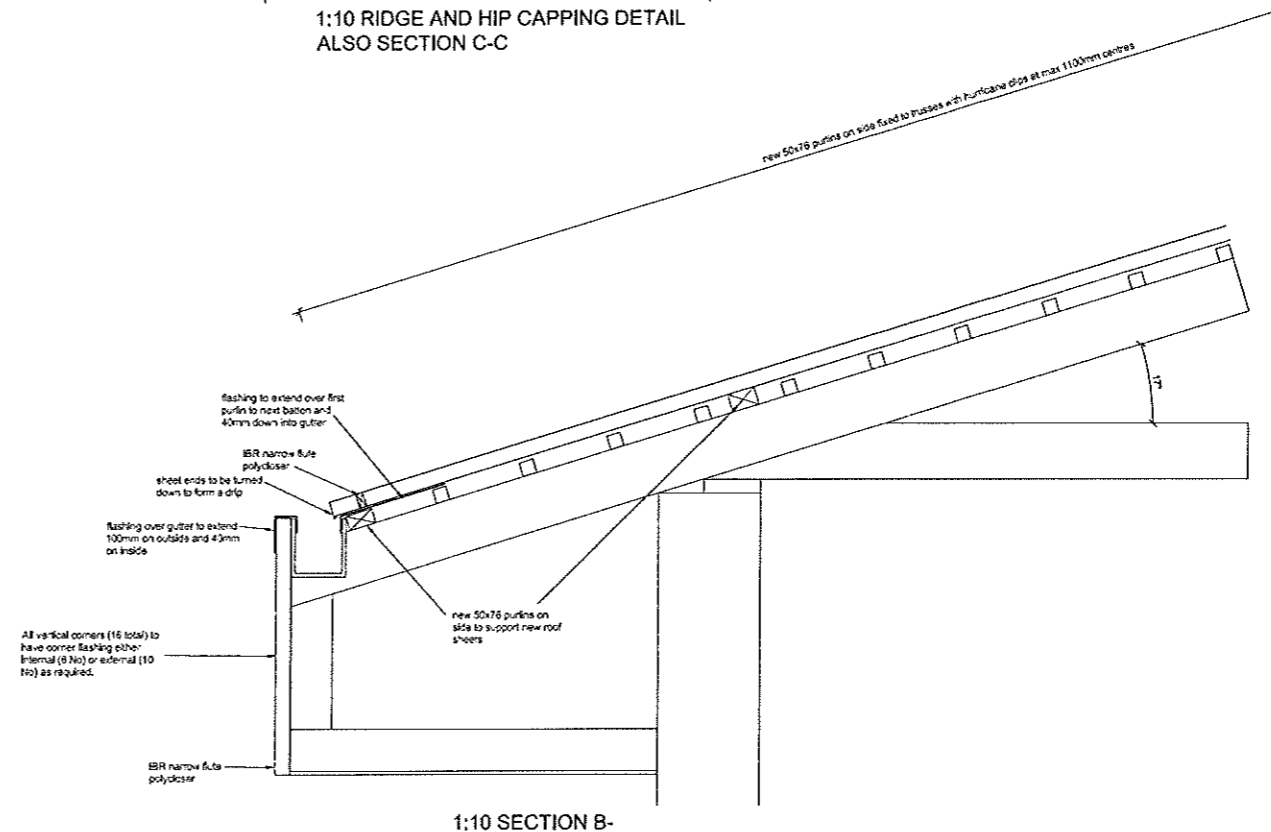


GENERAL:
 1. ALL DISCREPANCIES TO BE REPORTED TO THE ENGINEER.
 2. ALL DIMENSIONS AND LEVELS TO BE VERIFIED ON SITE.
 3. ALL MATERIALS AND WORKMANSHIP TO BE IN ACCORDANCE WITH THE RELEVANT CLAUSES OF SABS 1200.

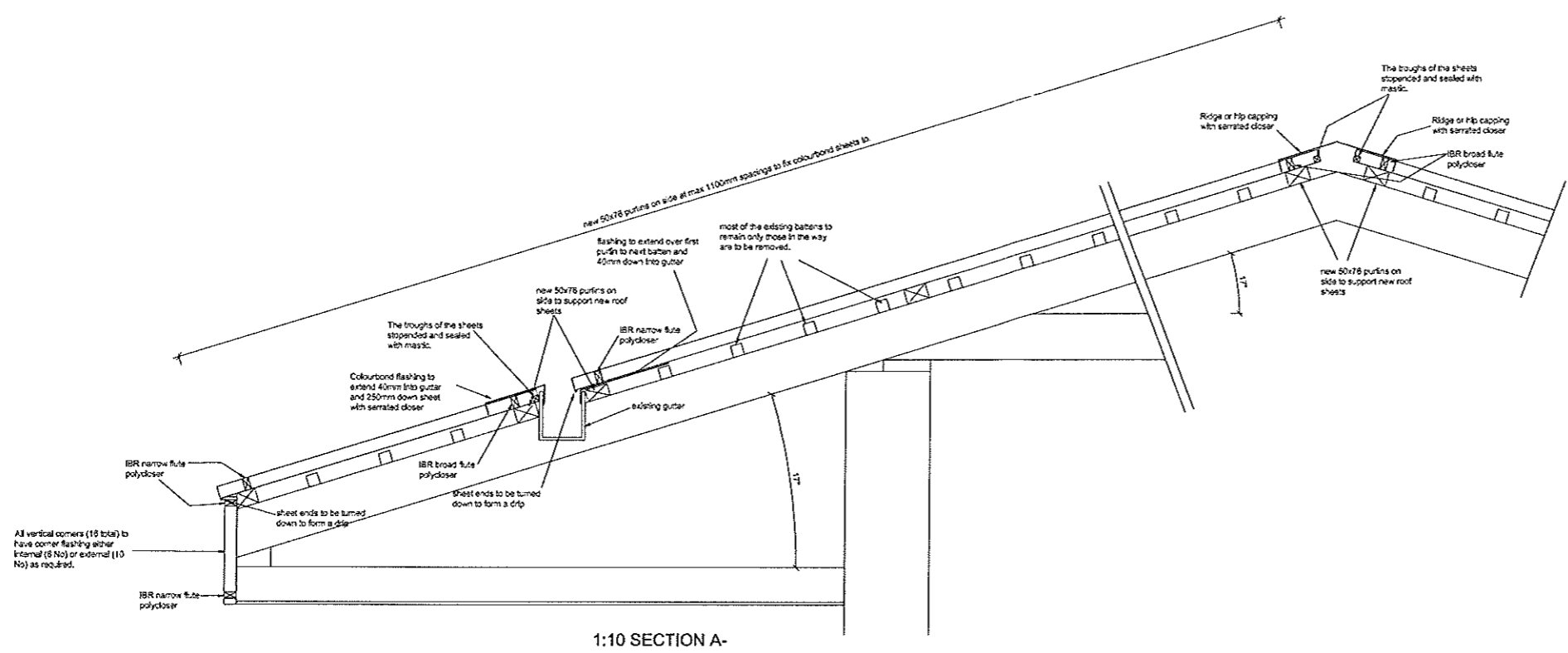
Roof:
 4. ALL ROOF SHEETS ARE TO BE CUT USING NIBBLERS OR OTHER APPROVED METHOD. NO HOT ANGLE GRINDER BLADES ALLOWED.
 5. ALL SHEETS ARE NOT TO HAVE END LAPS THEY MUST BE FULL LENGTH.
 6. ALL FIXINGS ARE TO BE APPROVED BY THE SHEETING MANUFACTURER.
 7. ALL ADDITIONAL TIMBER TO BE TREATED TO A H2 SPECIFICATION.



THIS DRAWING TO READ IN CONJUNCTION WITH THE SPECIFICATION SHEET HL1.



THIS DRAWING TO READ IN CONJUNCTION WITH THE SPECIFICATION SHEET HL1.



OVERBERG CONSULTING ENGINEERS 7 MAGNOLIA STREET NORTH CLIFF HERMANUS 7200	
UNITRADE 121 CC Trading on TEL 028 317 2900 CEL 081 302 4343 FAX 028 319 2500	
Client OVERSTRAND MUNICIPALITY	
Project HAWSTON LIBRARY ALTERATIONS	
Drawing description ROOF REPLACEMENT DETAILS	
Drawn by I.W.	Date 05/04/13
Checked by I.W.	Scale as shown
Drawing No. H2529-01	