



**OVERSTRAND MUNICIPALITY**  
P O BOX 20, HERMANUS, 7200

**QUOTATION NO.SC 619/2009**

**Quotations are hereby invited for the BUILDING OF A SERVER ROOM: at the Stanford Municipal Office.**

Documents, in English, are obtainable at the offices of Overstrand Municipality at Hermanus Administration – Carlouw Engelbrecht, Tel. 028 – 313 8161 between 08:00 and 16:30 upon payment of a **non refundable** tender participation fee. Cheques to be made payable to “**Overstrand Municipality**”.

*Alternatively the documents can be downloaded from our website free of charge: **[www.overstrand.gov.za](http://www.overstrand.gov.za)**.*

**Tenderers must be registered with the CIDB in a 1GB or higher class of construction works.**

Sealed quotations, with “Quotation No SC 619 / 2009 **BUILDING OF A SERVER ROOM**” clearly endorsed on the envelope, must be deposited in **Tender Box No 2** at the offices of the Overstrand Municipality, Magnolia Avenue, Hermanus before 12h00 on 24/04/2009 and will be opened as soon as possible thereafter.

**Please Note:**

**Tenders that are deposited in the incorrect box will not be considered.**

**Tender box deposit slot is 28cm x 2.5cm.**

**Mailed, telegraphic or faxed tenders will not be accepted.**

The Overstrand Municipality does not bind itself to accept the lowest or any quotation and reserves the right to accept any quotation, as it may deem expedient. Quotations are subject to the Standard Conditions of Tender, the Preferential Procurement Regulations of 2001, and the Supply Chain Management Policy of the Overstrand Municipality.

Quotations must be valid for at least 90 days after the closing date.

Please contact Ernie Muller at the following number (028 – 313 8190) for any technical information needed.

**MANAGER: INFRASTRUCTURE & PLANNING ICT (E MULLER)**  
**DIRECTORATE: MANAGEMENT SERVICES**  
**HERMANUS ADMINISTRATION**

**OVERSTRAND MUNISIPALITEIT**  
**Posbus 20, Hermanus, 7200**

**KWOTASIE NO SC 619 /2009**

Kwotasies word hiermee ingewag vir die **BOU VAN 'n "SERVER ROOM"** by die Stanford Munisipale kantoor.

Dokumente, in Engels, is verkrygbaar by die kantore van Munisipaliteit Overstrand te Hermanus Administrasie Carlouw Engelbrecht, Tel. 028 – 313 8161 tussen 08:00 en 16:30 na betaling van 'n **nie terugbetalende** tender deelname. Tjeks moet uitgemaak word aan "**Overstrand Munisipaliteit**".

*Dokumente is ook gratis beskikbaar op web-blad: [www.overstrand.gov.za](http://www.overstrand.gov.za).*

Die sluitingstyd en datum van die tender is **24/04/2009 om 12:00**.

Kwotasies, voltooi in elke opsig en duidelik gemerk : "**Kwotasie Nr. SC 619 /2009: "BOU VAN 'n "SERVER ROOM"**" en in 'n verseëelde koevert moet in die **tenderbus 2** by die kantore van die Munisipaliteit Overstrand, Magnoliaaan, Hermanus, voor die sluitingstyd en datum geplaas word. Tenders sal direk na die sluitingstyd in die openbaar oopgemaak word in die Komiteekamer, Hermanus Administrasie.

**Let Wel:**

**Tenders wat in die verkeerde tender bus geplaas word sal nie oorweeg word nie.**

**Die gleuf van die tender bus is 28cm x 2.5cm.**

**Tenders wat gepos, telegrafies versend of gefaks is sal nie aanvaar word nie.**

Kwotasies moet geldig wees vir ten minste (90) dae na sluitingsdatum.

Die Munisipaliteit Overstrand is nie verplig om die laagste of enige tender wat ingedien word te aanvaar nie. Tenders is onderworpe aan die Standaard Tender Voorwaardes, Voorkeur Verkrygings Regulasies van 2001 en die Voorkeur Verkrygings Beleid van Overstrand Munisipaliteit.

Vir tegniese navrae kan Ernie Muller by telefoon nommer 028 – 313 8190 gekontak word.

**BESTUURDER: INFRASTRUKTUUR & BEPLANNING IKT (E MULLER)**  
**DIREKTORAAT: BESTUURSDIENSTE**  
**HERMANUS ADMINISTRASIE**

**UMASIPALA WE-OVERSTRAND**  
POSBUS/P O BOX 20, HERMANUS, 7200

**ISINIKI-XABISO/UQIKELELO-XABISO NO. SC 619 /2009**

**Kucelwa isiniki-xabiso/ uqikelelo-xabiso sokuqeshwa komntu ozakwakha igumbi lokusebenzela (server room) kuMasipala wase Stanford.**

Amaxwebhu, abhalwe ngesiNgesi, ayafumaneka kwii-ofisi zikaMasipala we-Overstrand kuLawulo lwaseHermanus, ku Carlouw Engelbrecht, ifowuni 028-313 8161 phakathi kweye-08:00 neye-16:30 usakuhlalwa umrhumo wokuthatha inxaxheba kwiziniki-maxabiso **ongabuyiswayo**. litsheki mazenziwe zihlawuleke ku **"Masipala we-Overstrand"**.

*Okanye amaxwebhu angakhutshelwa esuka kwi-webhusayithi yethu: [www.overstrand.gov.za](http://www.overstrand.gov.za).*

**Abathabathi nxaxheba kufuneka bebhalese ngokusemthethweni neCIDB kwicandelo 1GB okanye ngaphezulu kumsebenzi wokwakha.**

Iziniki-maxabiso/uqikelelo-xabiso ezitywinwe kwabhalwa, **"ISINIKI-XABISO/UQIKELELO-XABISO NO SC 619 / 2009"**: ibhalwe ngokucacileyo kwimvulophu, mayifakwe kwi **Bhokisi yeZiniki-maxabiso No 2** kwii-ofisi zikaMasipala wase-Overstrand, Magnolia Avenue, Hermanus phambi kweye-12h00 ngomhla we 24 Apreli 2009 kwaye emva koko ziya kuvulwa ngokukhawuleza.

**Nceda Qaphela:**

- **Iziniki-maxabiso ezifakwe kwibhokisi engeyiyo aziyi kuqwalaselwa.**  
**Umngxuma wokufaka webhokisi yeziniki-maxabiso ungama-28cm x 2.5cm.**  
**Iziniki-maxabiso eziposiweyo, ezocingo okanye ezifeksiweyo aziyi kwamkelwa.**

UMasipala we-Overstrand akazibopheleli ekwamkeleni ixabiso elilelona liphantsi okanye nasiphi isiniki-xabiso kwaye unelungelo lokwamkela nasiphi na isiniki-xabiso, njengoko ebona kufanelekile. Iziniki-maxabiso ziphantsi koMgangatho woLawulo lweZiniki-maxabiso, uMmiselo oKhethekileyo wokuFumana ka-2001 neNkqubo yoLawulo lweTyathanga loKubonelela kaMasipala we-Overstrand.

Iziniki-maxabiso mazibesemthethweni kangangentsuku ezingamashumi alithoba (90) emva komhla wokuvala.

Nceda nxibelelana no **Ernie Muller** kule nombolo ilandelayo (028 – **313 8190**) ngazo naziphi iinkcukacha ezingacacanga ozifunayo.

**UMPHATHI: WOLAWULO LOKWAKHA NOKUCWANGCISA (E MULLER)**  
**ABONGAMELI: KWINKONZO ZABAPHATHI**  
**ULAWULO LWE-HERMANUS**

## **QUOTATION NO.SC 619/2009**

Quotations are hereby invited for the **BUILDING OF A SERVER ROOM:** at the **Stanford Municipal Office.**

### **Specifications**

A contractor to verify all levels, heights and dimensions on site and check the same against drawings before commencing. Do not scale drawings.

#### **1. Foundations**

- All in 15 MPA concrete, external wall footings 700x230

#### **2. Walls**

- External walls 280 mm cavity construction built with clay stock bricks
- Walls plastered smooth internally – steel float finish
- Walls plastered smooth externally – wood float finish
- Brick force every single course below floor level.
- DPC at floor level must be stepped

#### **3. Flooring**

- Ceramic tiles laid on 25mm screed laid on 75mm concrete base on a 250mm micron damp proof membrane
- Filling under floor slab compacted in 150mm layers

#### **4. Ceiling**

- All ceiling skimmed
- Cornice 75mm gypsum cove cornice all round

#### **5. Skirting & Doors**

- 22x90 Hardwood skirting and be varnished.
- Island door 1 hour fire rating and be varnished

#### **6. Roof concrete slab**

- Construction & specifications according to engineers detail

#### **7. Electrical**

- Five foot (dual 58 watt) vapor proof fluorescent lamp (covered)

Electrical Distribution Box

- a) 12-way Sarel type or equivalent
- b) 60A Single Phase Earth leakage switch

- c) 1x 15A single pole circuit breaker for plugs (5 plugs)
- d) 1x 10A single pole circuit breakers for light
- e) A suitable rated double pole circuit breaker for air-conditioning (9000 BTU unit)
- f) 100mm x 40mm dual ducting to be used. (Gap to be allowed to facilitate the removal of the covers)

### **Construction of the building**

The approved building plan, and the spec for the concrete roof/slab is included in the tender documentation to be made available to all prospective tenderers. The said plan will also be available at the Municipal Offices, Hermanus administration, Carlouw Engelbrecht, Tel. 028 – 313 8161 between 08:00 and 16:30.

## **SPECIFICATION DOCUMENT FOR CONCRETE ROOF (See plan for specifications)**

### **1. General Notes**

It will be expected from all prospective quotations to submit their bids inclusive

1. The contractor to keep a full set of drawings on site
2. The contractor is responsible for all settings out of buildings
3. All levels and dimensions to be verified on site. All discrepancies to be reported immediately
4. Only figured dimensions to be used
5. All drawings to be read in conjunction with architects or any other relevant drawings
6. Construction to be in accordance with engineers specification, drawings or relevant SABS specifications
7. Engineer to be given 24 hours notice prior to any required inspections

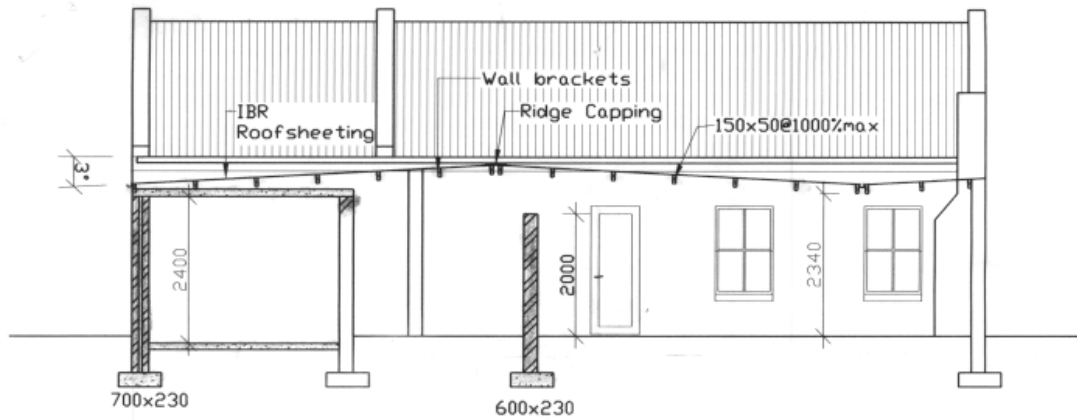
### **2. Reinforcement Specifications**

1. All reinforcing to be bent according to SABS 920
2. Reinforcing to be fixed in accordance to tolerances specified in SABS 1200G
3. No heat bending or cutting or reinforcing unless indicated on drawing or approved by engineer
4. Contractor to check fixed reinforcing prior to inspection by engineer

### **3. Concrete Specifications**

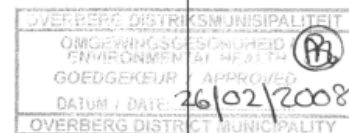
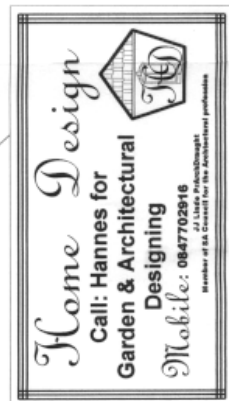
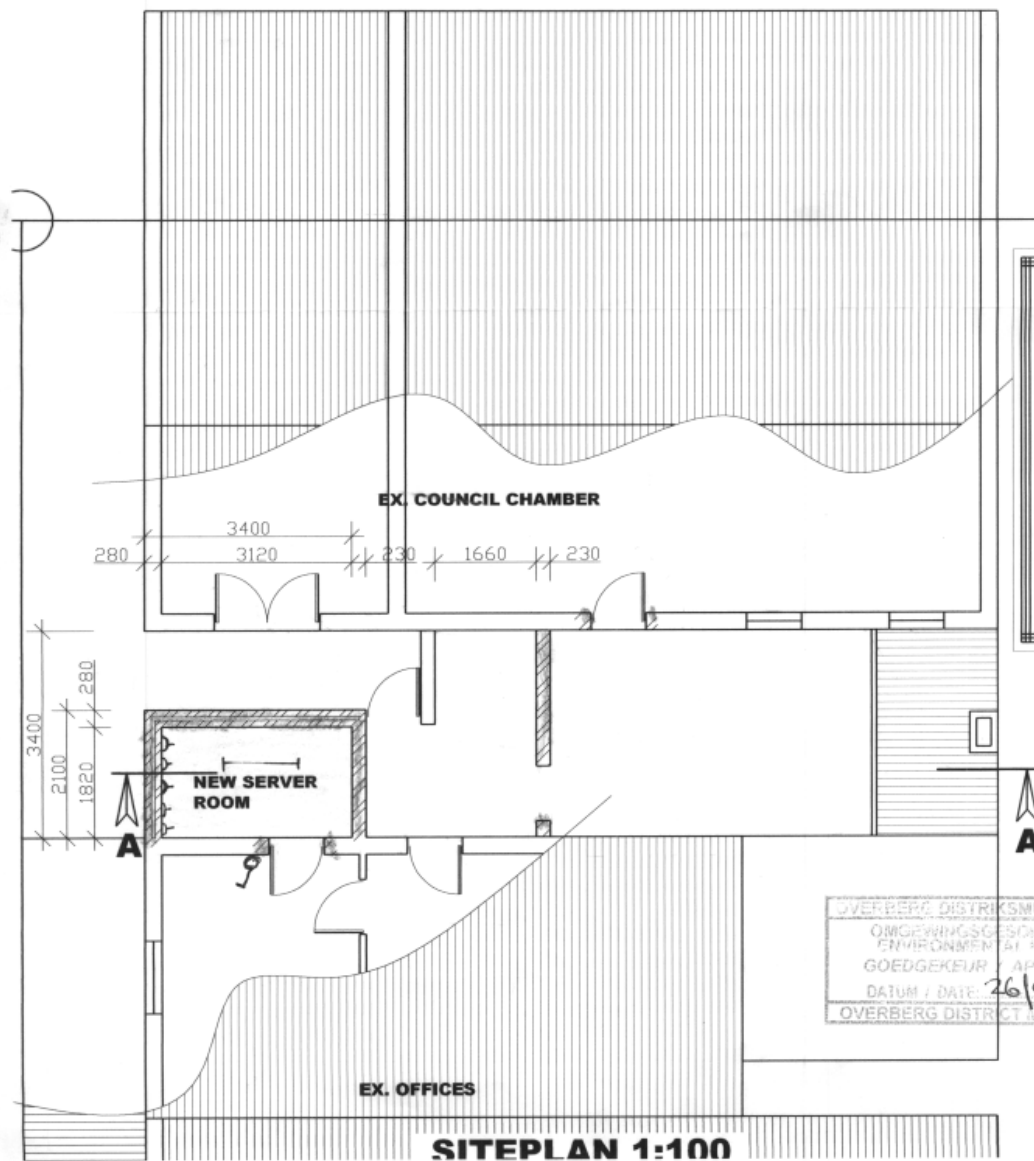
1. All concrete works to comply with SABS 1200G, SABS 0100-1 and SABS 0100-2
2. Concrete strengths as specified on the drawings
3. Concrete cube results to be submitted as specified in SABS 1200G
4. No chasing or cast-in items allowed in any reinforced concrete unless written approval is received from engineer
5. Reinforced concrete to comply with "DEGREE OF ACCURACY II" as specified SABS 1200G
6. Off-Shutter concrete to comply with "DEGREE OF ACCURACY II" specified SABS 1200G
7. Curing of concrete to comply with SABS 1200G
8. Engineer to approve cover blocks prior to commencement of steel fixing
9. Cover to reinforcing to be as follows unless otherwise specified

R.C Strip footings	50mm
R.C Column bases	50mm
R.C Columns	30mm
R.C slabs	25mm
R.C beams	25mm



**SECTION A-A 1:100**

Building Area (Covered)	
Afdak	33.66 m <sup>2</sup>
Server room	7.14 m <sup>2</sup>
<b>Total covered area</b>	<b>40.8 m<sup>2</sup></b>



**SITEPLAN 1:100**

